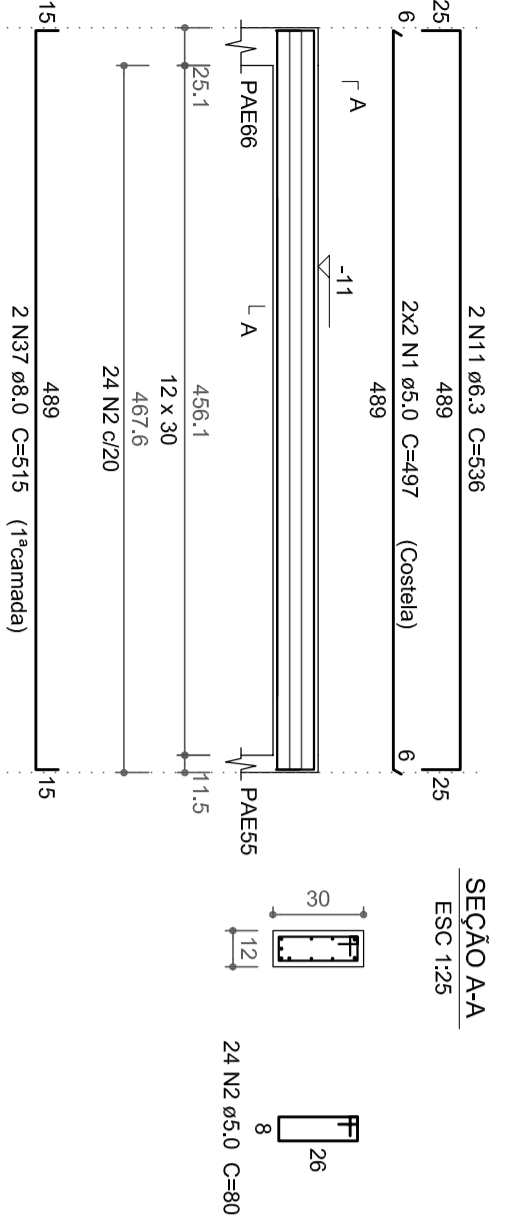
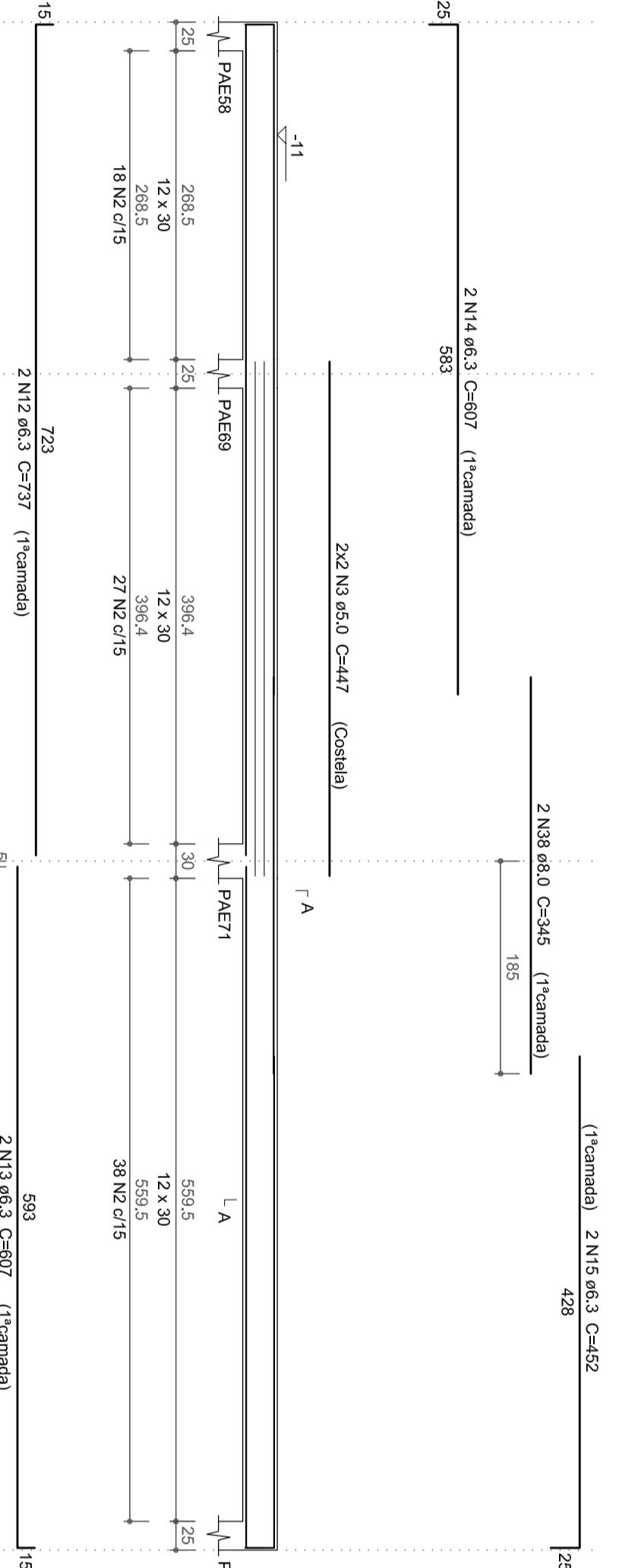


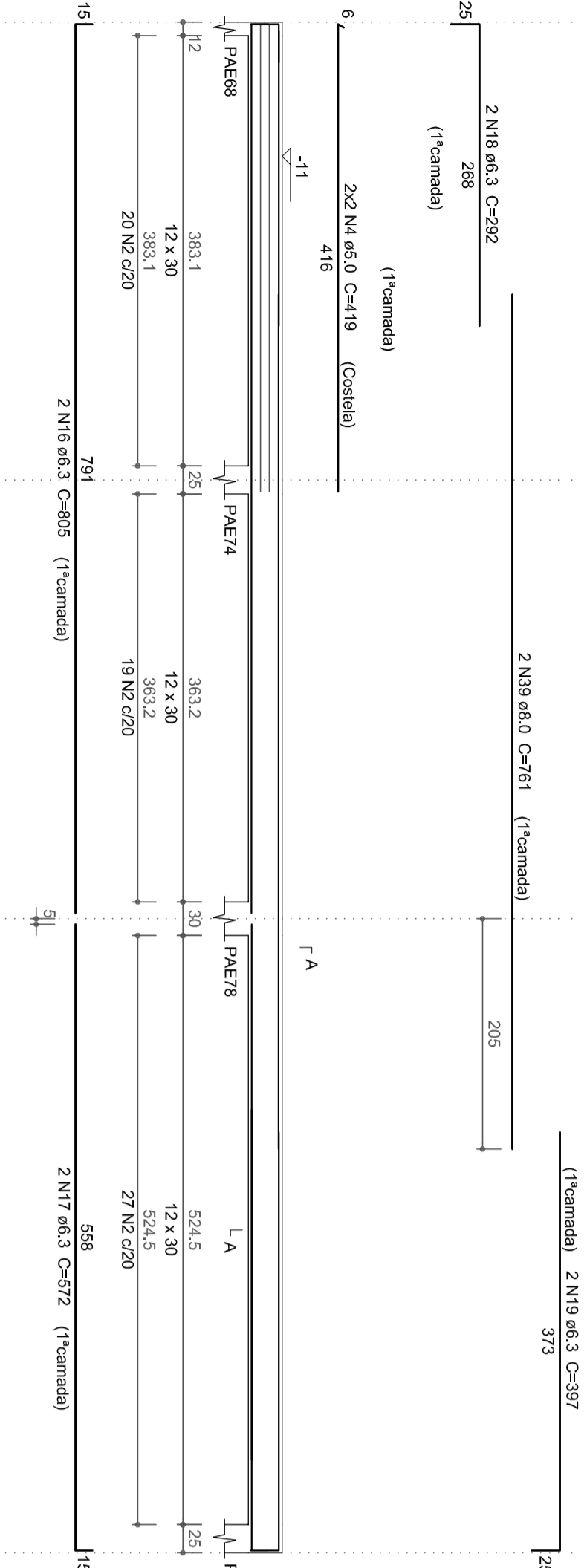
VAE87 (12 x 30)



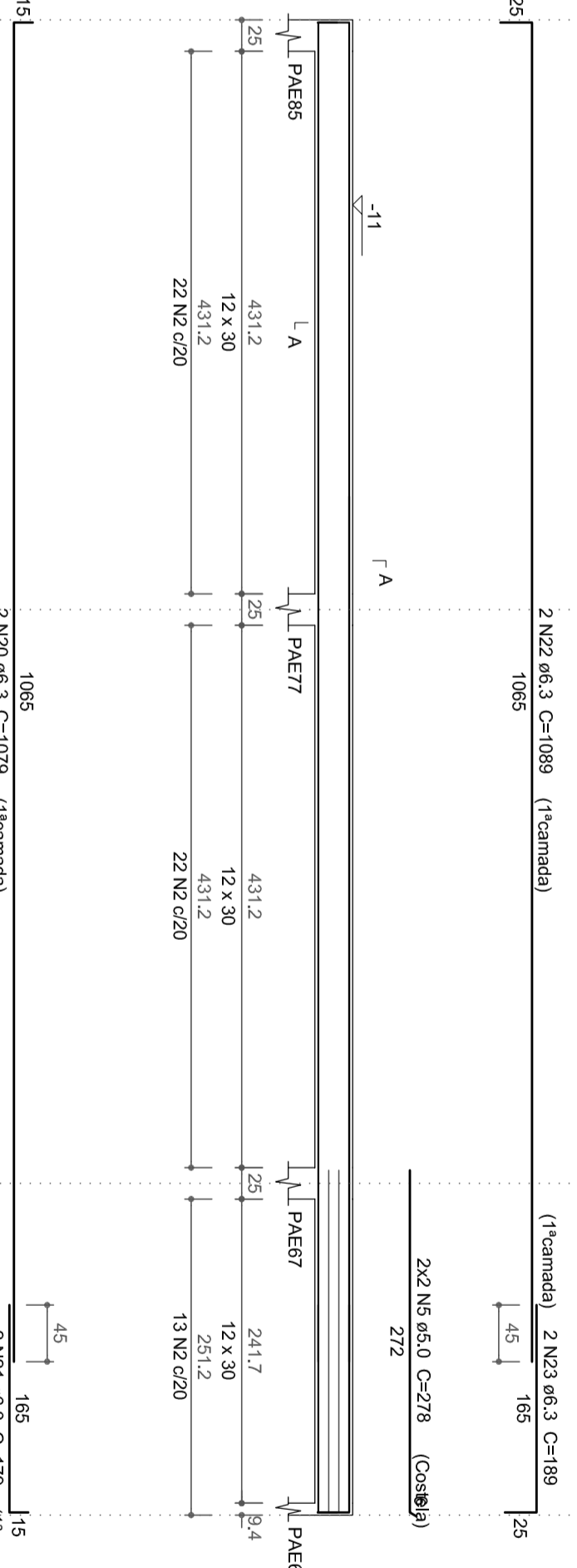
VAE88 (12 x 30)



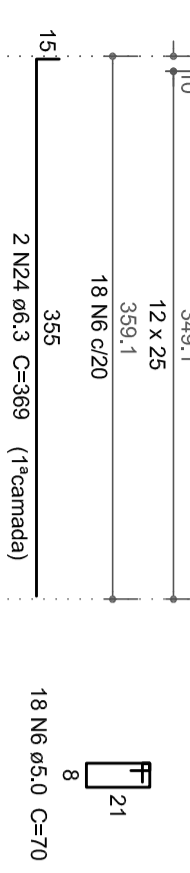
VAE89 (12 x 30)



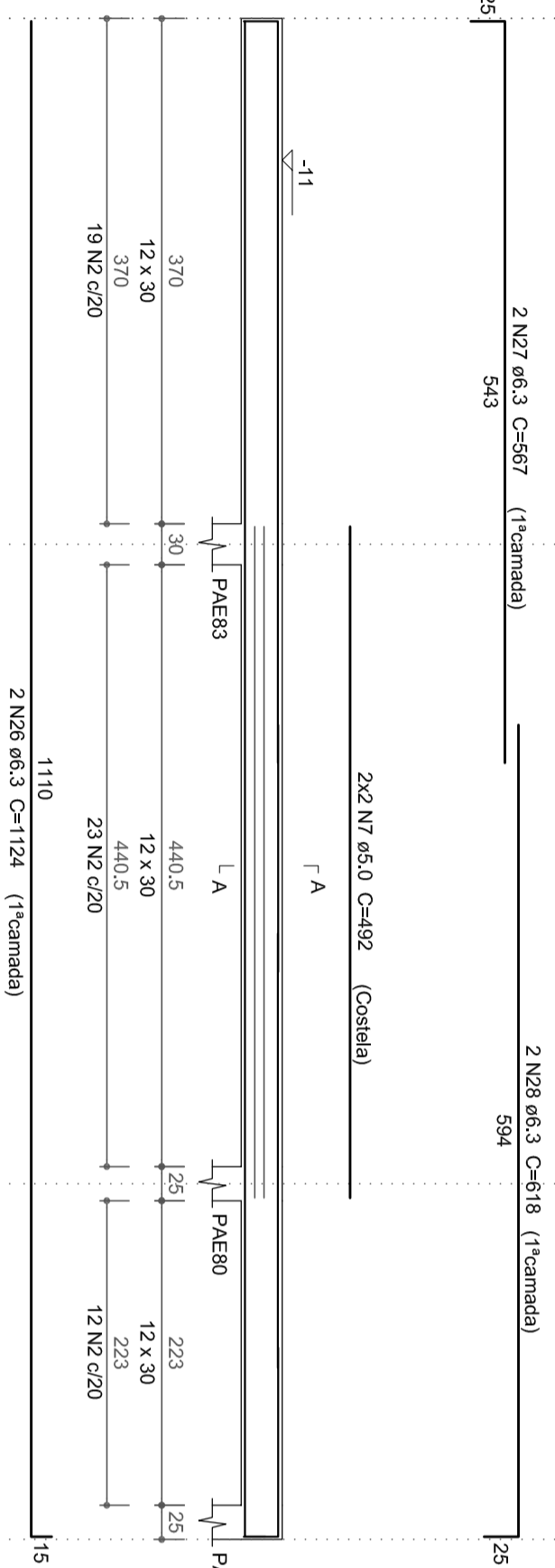
VAE90 (12 x 30)



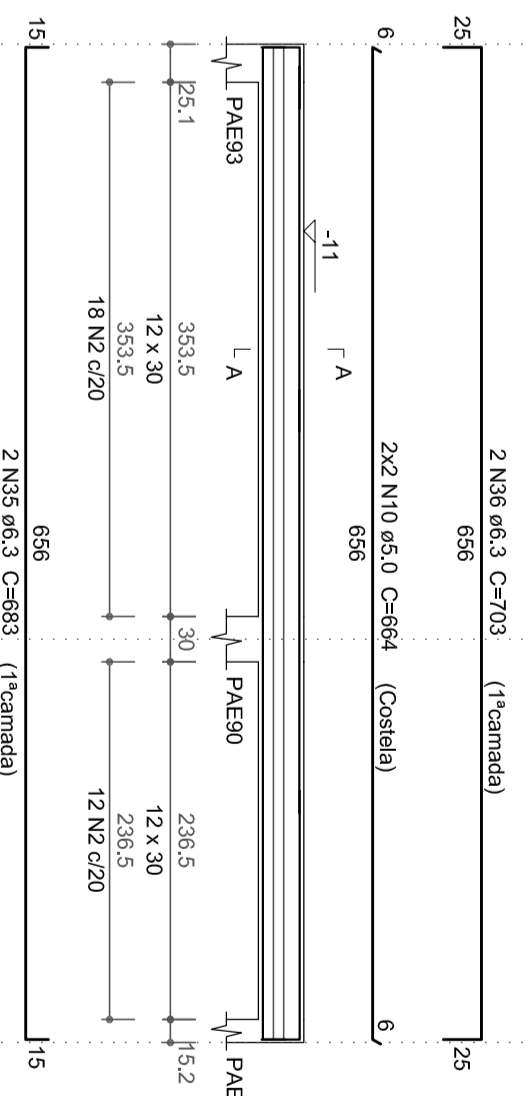
VAE91 (12 x 25)



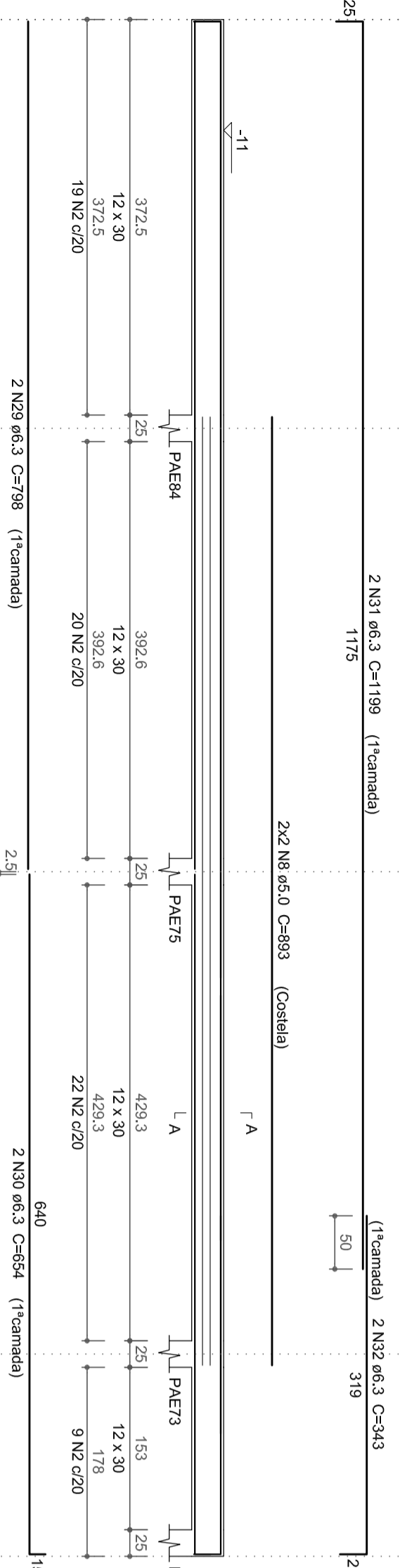
VAE92 (12 x 30)



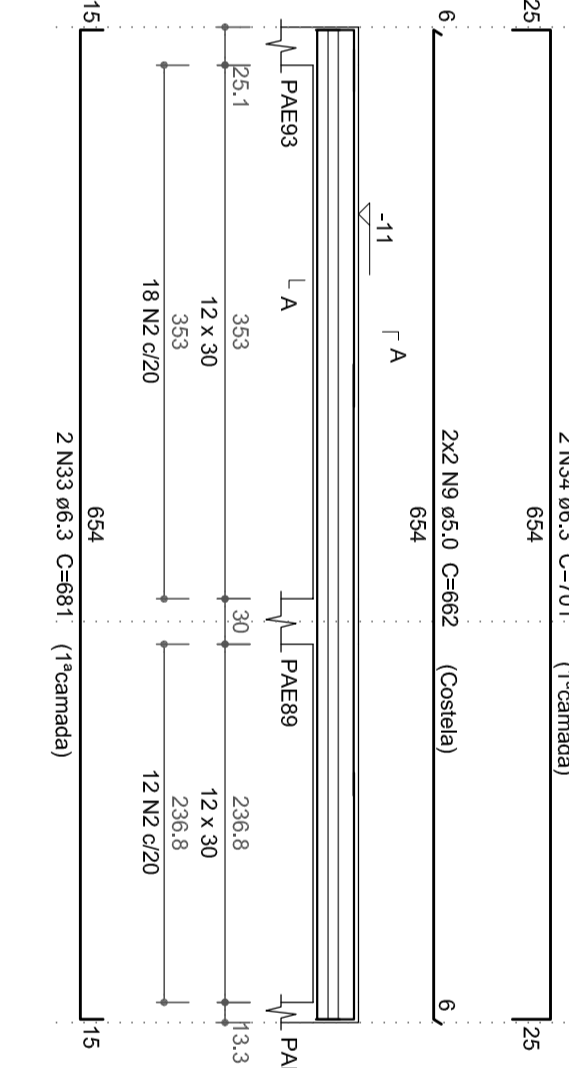
VAE95 (12 x 30)



VAE93 (12 x 30)



VAE94 (12 x 30)



Seleção do aço

CAPO	N	DIA	QUANT	C.UMT	C.TOTAL
VAE87	1	5,0	4	497	1988
VAE88	2	5,0	4	447	1788
VAE89	3	5,0	4	478	1912
VAE90	4	5,0	4	478	1912
VAE91	5	5,0	18	70	1260
VAE92	6	5,0	4	492	1968
VAE93	7	5,0	4	492	1968
	8	5,0	4	492	1968
	9	5,0	4	492	1968
	10	5,0	4	492	1968
	11	5,0	4	492	1968
	12	5,0	4	492	1968
	13	5,0	4	492	1968
	14	5,0	4	492	1968
	15	5,0	4	492	1968
	16	5,0	4	492	1968
	17	5,0	4	492	1968
	18	5,0	4	492	1968
	19	5,0	4	492	1968
	20	5,0	4	492	1968
	21	5,0	4	492	1968
	22	5,0	4	492	1968
	23	5,0	4	492	1968
	24	5,0	4	492	1968
	25	5,0	4	492	1968
	26	5,0	4	492	1968
	27	5,0	4	492	1968
	28	5,0	4	492	1968
	29	5,0	4	492	1968
	30	5,0	4	492	1968
	31	5,0	4	492	1968
	32	5,0	4	492	1968
	33	5,0	4	492	1968
	34	5,0	4	492	1968
	35	5,0	4	492	1968
	36	5,0	4	492	1968
	37	5,0	4	492	1968
	38	5,0	4	492	1968
	39	5,0	4	492	1968
	40	5,0	4	492	1968

Resumo do aço

CAPO	DIA	C.TOTAL	PESO * 10 %
CA50	5,0	327,5	88,1
CA50	8,0	14,4	3,9
CA50	8,0	57,5	15,8
PESO TOTAL			107,8
CA50	10,2		
CA50	10,2		

Volume de concreto (C=20) = 3,28 m³
 Área de forma = 61,65 m²

Fck = 20 MPa

REFORMA E ADEQUAÇÃO DA SEDE DA PREFEITURA DE IOMERÊ/SC

RESPONSÁVEL PELO PROJETO: _____
 CONTEÚDO DA PRONCHA: ARMAÇÃO DAS VIGAS DE BALDRAME DOS ACESSOS EXTERNOS
 ESCALAS: INDICADAS
 DATA: 08/19
 DESENHO: Djalison

05/05

PROJETO ESTRUTURAL (exclusivo)
 PROPRIETÁRIO: MUNICÍPIO DE IOMERÊ